

MMBA 系列
SERIES

◆ 特 长 / FEATURES

- 小型品。
- 具有自我修复性，是一款值得信赖的电容器。
- 外包装使用难燃性 (UL94 V-0) 环氧树脂，有优良的安全性。
- RoHS指令对应品。
- Small and light.
- Reliability is excellent because these capacitors provide self-healing.
- Coated with flame-retardant (UL94 V-0) epoxy resin.
- RoHS compliance.

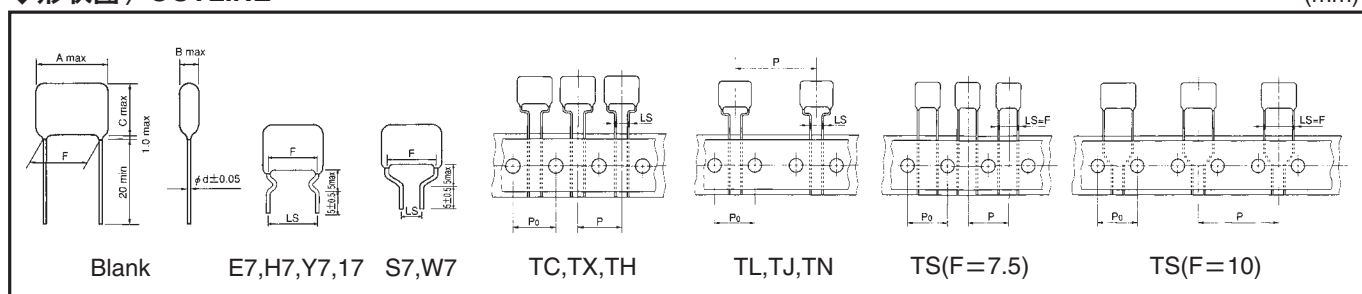


◆ 规 格 / SPECIFICATIONS

工作温度 / Category Temperature	-40°C ~ +85°C
额定电压 / Rated Voltage (U _R)	125VAC, 250VAC
静电容量允许差 / Capacitance Tolerance	±10%(K)
损失角正切值 / tan δ	0.01max at 1kHz
耐电压 / Voltage Proof	U _R × 230% 60s
绝缘电阻 / Insulation Resistance	125VAC C ≤ 0.33μF: 9000MΩ min 250VAC 2000MΩ min C > 0.33μF: 3000Ω F min
标准规格 / Reference Standard	JIS C 5101-1

◆ 形状图 / OUTLINE

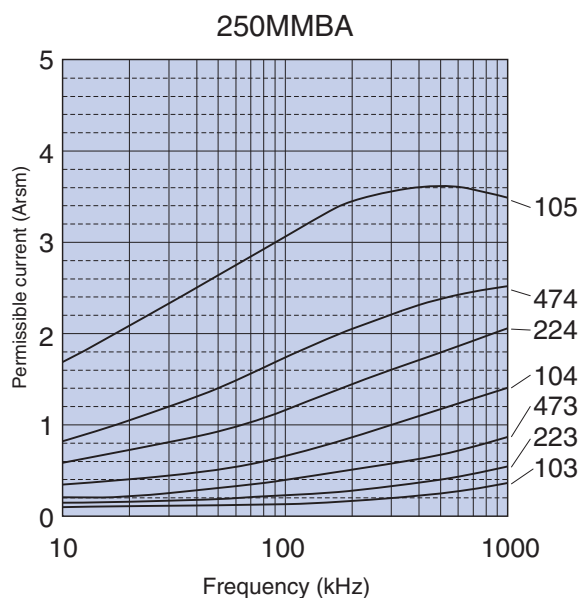
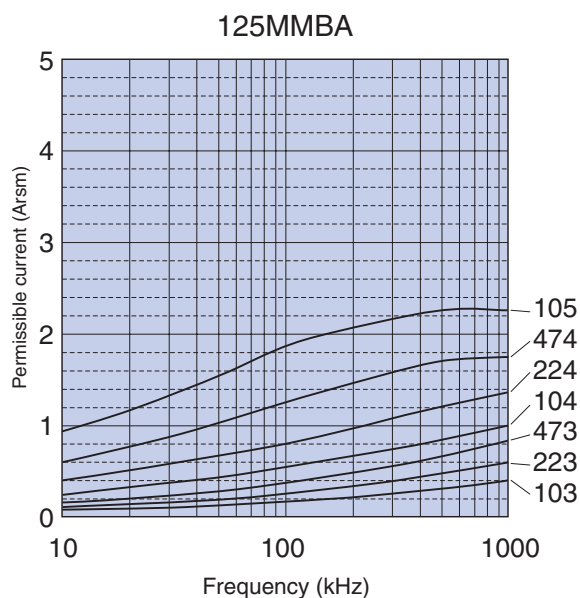
(mm)



◆ 产品型号体系 / PART NUMBER



◆ 相对于频率的允许电流 / PERMISSIBLE CURRENT FOR FREQUENCY



◆标准品一览表/STANDARD SIZE

□ : 静电容量允许差记号 / Tolerance **: 端子加工记号 / Suffix

额定电压 Rated Voltage	额定静电容量 Cap(μF)	尺寸 Dimensions (mm)						标准包装数 / Typical Packaging Quantity (pcs)							编号 Part No.
		A	B	C	F±1.0	LS±0.5	d	长引线品 Long Lead type		编带(层叠包装)品-其他形状 Taping Ammo pack type - style					
								Bag	Carton	TC	TX, TH	TL, TJ	TN	TS	
125 VAC	0.01	10.0	5.5	9.5	7.5	5.0/7.5	0.6	200	6,000	1,000	-	-	-	1,000	125MMBA103□**
	0.012	10.0	5.5	9.5	7.5	5.0/7.5	0.6	200	6,000	1,000	-	-	-	1,000	125MMBA123□**
	0.015	10.0	5.5	9.5	7.5	5.0/7.5	0.6	200	6,000	1,000	-	-	-	1,000	125MMBA153□**
	0.018	10.0	5.5	9.5	7.5	5.0/7.5	0.6	200	6,000	1,000	-	-	-	1,000	125MMBA183□**
	0.022	10.0	5.5	9.5	7.5	5.0/7.5	0.6	200	6,000	1,000	-	-	-	1,000	125MMBA223□**
	0.027	10.0	5.5	9.5	7.5	5.0/7.5	0.6	200	6,000	1,000	-	-	-	1,000	125MMBA273□**
	0.033	10.0	5.5	9.5	7.5	5.0/7.5	0.6	200	6,000	1,000	-	-	-	1,000	125MMBA333□**
	0.039	10.0	5.5	10.0	7.5	5.0/7.5	0.6	200	5,000	1,000	-	-	-	1,000	125MMBA393□**
	0.047	10.0	6.0	10.5	7.5	5.0/7.5	0.6	200	5,000	1,000	-	-	-	1,000	125MMBA473□**
	0.056	10.0	6.0	11.0	7.5	5.0/7.5	0.6	200	4,000	1,000	-	-	-	1,000	125MMBA563□**
	0.068	10.0	6.0	12.5	7.5	5.0/7.5	0.6	200	4,000	1,000	-	-	-	1,000	125MMBA683□**
	0.082	10.0	6.5	13.0	7.5	5.0/7.5	0.6	200	4,000	1,000	-	-	-	1,000	125MMBA823□**
	0.1	10.0	6.0	9.0	7.5	5.0/7.5	0.5	200	6,000	1,000	-	-	-	1,000	125MMBA104□**
	0.12	10.0	6.0	9.0	7.5	5.0/7.5	0.5	200	6,000	1,000	-	-	-	1,000	125MMBA124□**
	0.15	10.0	6.5	10.0	7.5	5.0/7.5	0.5	200	5,000	1,000	-	-	-	1,000	125MMBA154□**
	0.18	10.0	6.5	11.0	7.5	5.0/7.5	0.5	200	5,000	1,000	-	-	-	1,000	125MMBA184□**
	0.22	10.0	6.5	11.5	7.5	5.0/7.5	0.5	200	4,000	1,000	-	-	-	1,000	125MMBA224□**
	0.27	12.5	6.0	11.5	10.0	5.0/7.5/10.0	0.6	200	4,000	-	1,000	500	-	500	125MMBA274□**
	0.33	12.5	6.5	12.0	10.0	5.0/7.5/10.0	0.6	200	3,000	-	1,000	500	-	500	125MMBA334□**
	0.39	12.5	7.0	12.5	10.0	5.0/7.5/10.0	0.6	200	3,000	-	500	500	-	500	125MMBA394□**
0.47	12.5	7.5	13.5	10.0	5.0/7.5/10.0	0.6	100	2,000	-	500	500	-	500	125MMBA474□**	
0.56	12.5	7.5	15.0	10.0	5.0/7.5/10.0	0.6	100	2,000	-	500	400	-	400	125MMBA564□**	
0.68	12.5	8.0	15.5	10.0	5.0/7.5/10.0	0.6	100	2,000	-	500	400	-	400	125MMBA684□**	
0.82	17.5	7.5	14.0	15.0	5.0/7.5/15.0	0.6	100	2,000	-	-	400	400	-	125MMBA824□**	
1	17.5	8.0	15.0	15.0	5.0/7.5/15.0	0.6	100	1,500	-	-	400	400	-	125MMBA105□**	
250 VAC	0.01	12.5	5.0	9.0	10.0	5.0/7.5/10.0	0.6	200	5,000	-	1,000	500	-	500	250MMBA103□**
	0.012	12.5	5.5	9.5	10.0	5.0/7.5/10.0	0.6	200	5,000	-	1,000	500	-	500	250MMBA123□**
	0.015	12.5	6.0	10.0	10.0	5.0/7.5/10.0	0.6	200	4,000	-	1,000	500	-	500	250MMBA153□**
	0.018	12.5	6.0	10.0	10.0	5.0/7.5/10.0	0.6	200	4,000	-	1,000	500	-	500	250MMBA183□**
	0.022	12.5	5.5	9.5	10.0	5.0/7.5/10.0	0.6	200	4,000	-	1,000	500	-	500	250MMBA223□**
	0.027	12.5	5.5	11.0	10.0	5.0/7.5/10.0	0.6	200	4,000	-	1,000	500	-	500	250MMBA273□**
	0.033	12.5	5.5	11.0	10.0	5.0/7.5/10.0	0.6	200	4,000	-	1,000	500	-	500	250MMBA333□**
	0.039	12.5	6.0	11.5	10.0	5.0/7.5/10.0	0.6	200	4,000	-	1,000	500	-	500	250MMBA393□**
	0.047	12.5	6.5	12.0	10.0	5.0/7.5/10.0	0.6	200	3,000	-	1,000	500	-	500	250MMBA473□**
	0.056	18.0	5.5	11.0	15.0	5.0/7.5/15.0	0.6	200	3,000	-	-	500	400	-	250MMBA563□**
	0.068	18.0	6.0	11.0	15.0	5.0/7.5/15.0	0.6	100	3,000	-	-	500	400	-	250MMBA683□**
	0.082	18.0	6.0	11.5	15.0	5.0/7.5/15.0	0.6	100	3,000	-	-	500	400	-	250MMBA823□**
	0.1	18.0	6.0	13.0	15.0	5.0/7.5/15.0	0.6	100	2,000	-	-	500	400	-	250MMBA104□**
	0.12	18.0	7.0	13.5	15.0	5.0/7.5/15.0	0.8	100	2,000	-	-	500	400	-	250MMBA124□**
	0.15	18.0	7.5	14.5	15.0	5.0/7.5/15.0	0.8	100	1,500	-	-	400	400	-	250MMBA154□**
	0.18	18.0	8.0	15.0	15.0	5.0/7.5/15.0	0.8	100	1,500	-	-	400	400	-	250MMBA184□**
	0.22	18.0	9.0	15.5	15.0	5.0/7.5/15.0	0.8	100	1,500	-	-	400	300	-	250MMBA224□**
	0.27	25.5	7.0	16.0	22.5	22.5	0.8	50	1,500	-	-	-	-	-	250MMBA274□**
	0.33	25.5	8.0	16.5	22.5	22.5	0.8	200	1,000	-	-	-	-	-	250MMBA334□**
	0.39	25.5	8.5	17.0	22.5	22.5	0.8	200	1,000	-	-	-	-	-	250MMBA394□**
0.47	25.5	9.0	18.0	22.5	22.5	0.8	200	800	-	-	-	-	-	250MMBA474□**	
0.56	25.5	9.0	20.0	22.5	22.5	0.8	200	800	-	-	-	-	-	250MMBA564□**	
0.68	25.5	10.5	21.0	22.5	22.5	0.8	100	500	-	-	-	-	-	250MMBA684□**	
0.82	31.0	10.0	20.5	27.5	-	0.8	100	500	-	-	-	-	-	250MMBA824□**	
1	31.0	11.0	22.0	27.5	-	0.8	100	500	-	-	-	-	-	250MMBA105□**	

注) 1. 连接条件 (Fig.1, Fig.2)
2. 用于防止杂音时, 脉冲电压应在Table 1的值以下。

Note) 1. Operating circuit (Fig.1, Fig.2)
2. When operating capacitor for noise suppression, voltage of pulse applied to the capacitor shall be within value specified in Table 1.

Fig.1

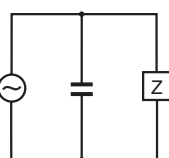


Fig.2

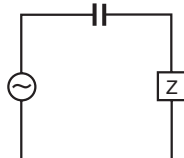


Table 1

额定电压 Rated Voltage	脉冲电压 Pulse Voltage
125VAC	250Vo-p
250VAC	630Vo-p